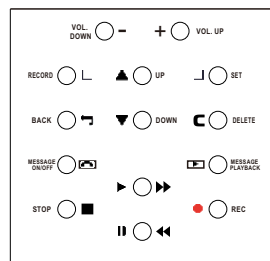
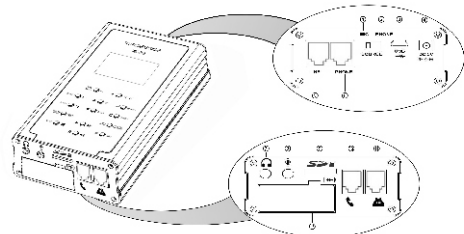


TELEPHONE RECORDER REC-780 USER MANUAL



KEYBOARD INTERFACE

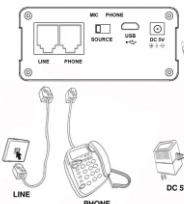
- ▶▶ Play/Next
- STOP
- ⏪ SET
- ⏮ Pause/Previous
- RECORD
- ⏩ RECORD

- 1) SOURCE PHONE
- 2) SOURCE MICROPHONE
- 3) USB Port
- 4) DV 5V
- 5) LINE port
- 6) PHONE port
- 7) Earphone
- 8) Microphone
- 9) Micro SD Card
- 10) Handset
- 11) Handset Line
- 12) Battery Case

Connection:

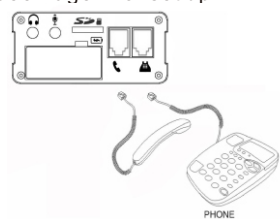
1. Analog line connection:

- a. Switch the SOURCE to PHONE
 - b. Telecom line to LINE port
 - c. Phone to PHONE port
- ** 📞 will be shown on the LCD. See P.7 for set up.



2. Digital phone Connection (Handset)

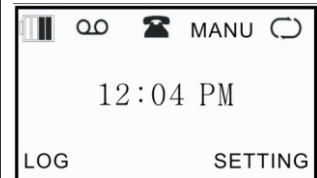
- a. Switch SOURCE to PHONE
 - b. Connect handset line to LINE
 - c. Connect handset to PHONE
- ** 📞 will be shown on the LCD. Voice trigger setup is necessary. See Page 7 for set up.



3. Microphone connection (Environmental Record)

- a. Switch SOURCE to MIC
- ** 🎤 will be shown on LCD. See Page 8 for set up

Main Menu



Standby mode Interface

- 🔋 Remaining battery capacity
- 📞 Recording display
- 🎤 Microphone recording mode
- 📞 Handset recording mode
- 🔄 Loop recording mode
- 🔊 Auto: Auto recording mode
- 🔊 Trigger: Voice Trigger mode
- 🔊 Manual: Manual recording mode
- 🔊 10H: Recording time of remaining capacity
- 🔊 Time: System Time

Talk Mode Interface

- Type: Incoming, Outgoing
- Elapse: Talking time
- Phone number: Incoming/Outgoing phone number

7 Setup

(A) Answer Machine

1. Play Greeting: Play a greeting message to callers.
2. Record Greeting: Record a greeting

3. Remote Access Code:

Set password for remote access. The default setting is 111.

4. Number of rings before the unit answers a call: You can change the number of times the phone rings "Ring Count" before the unit answers calls. You can select 2 to 7 rings.

** Toll saver- The unit's answering system answers at the end of the 2nd ring when new messages have been recorded, or at the end of the 4th ring when there are no new messages.

5. Enable the Answering System Remotely

If the answering system is off, you can enable it by ringing it on remotely. Setting range is 5-20 times

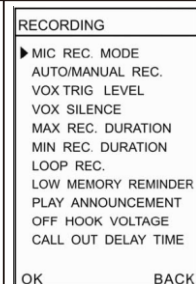
6. Messages Monitor Setting:

When this function is enabled, you may listen to message synchronously. Default setting is disable

7. Caller's Recording Time:

You can change the maximum message recording time allotted to callers. You can also select "Greeting only" which set the unit to greet callers but not record messages. The range is 2-5 minutes.

(B).Recording Parameter



1. MIC REC Mode:

Switch the SOURCE to MIC, REC-780 can record audio from built in microphone or external microphone.

(1) Manual Press REC button to start, Press STOP button to terminate.

(2) Automatic (Voice Trigger)

When voice level is higher than settings, it starts recording automatically.

2. Auto / Manual Rec.

You can set channel recording conditions

(1) Manual Recording Press "REC" button to start, press "STOP" button to terminate

(2) Automatic Recording

When line voltage is lower than settings, it starts recording automatically

(3) Voice Trigger

When voice level is higher than settings, it starts recording automatically.

3. VOX Trig Level

Adjust voice level in voice trigger conditions. Setting range is 1-10.

4. VOX Silence

Adjust silent time to terminate recording in voice trigger conditions. Setting Range is 5-99 sec

5. Max REC Duration

Set maximum recording time for single call. Setting range is 10 min ~ ∞

6. Min REC Duration

Set minimum recording time for single call. Setting range is 5 sec ~ ∞

7. Loop Recording

(1) Enable When the SD card capacity is insufficient, it will delete the old audio files automatically and keep recording.

(2) Disable

When the SD card capacity is insufficient, it will not record any more.

8. Storage Capacity Alert

The LCD remaining recordable time symbol will blink when storage capacity is lower than setting. Setting range is 5-99 hours.

9. Play Announcement

Enable / Disable to play announcement that the call is recorded to caller

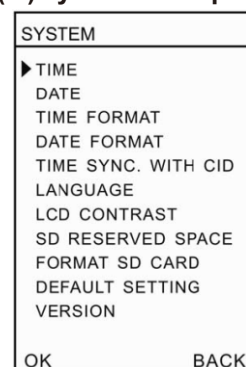
10. OFF Hook Voltage

The system will record the call automatically when the line voltage is lower than setting. Setting range is 15~30(V).

11. Call Out Delay Time

The system will record calls after setting delay time. Setting range is 0~20 sec

(C) System Setup



1. Time System time setup
2. Date System date setup
3. Time Format System time display format setup
4. Date Format System date display format setup
5. Time synchronization with Caller ID Synchronize the time with FSK Caller ID

6. Language

You can choose Traditional Chinese, Simple Chinese or English as system language.

7. LCD Contrast

Adjust the contrast of LCD display, the higher the brighter. Range 1-6

8. Micro SD Card Reserve Space

SD card can be set to retain the capacity for system smooth running.

9. Format SD Card

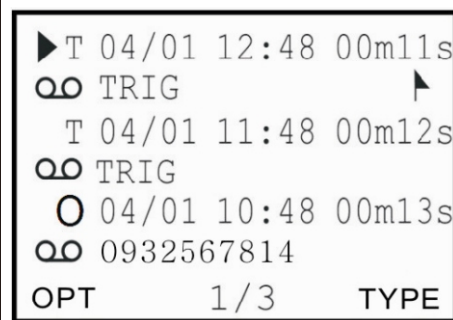
Format SD Card will remove all audio files.

10. Default setting

Reset to factory default.

8 Record

(A) Records Display Description



1. Record Type

I=Incoming call O=Outgoing call N=MIC T=Voice Trigger

A=Answering machine

2. Date /Time

Display date and time of audio files

3. Recording Length

Display the length of audio files.

4. 📞

Symbol indicates audio files, otherwise CDR only.

5. Incoming /Outgoing Call Number Display

Display incoming or outgoing numbers.

6. 📞

Symbol indicates the important audio files

(B).Operation



1. Play: Play selected audio files.

2. Flag: Mark important audio files.

3. Remove Flag: Remove mark on audio files.

4. Delete: Delete selected audio files or CDR.

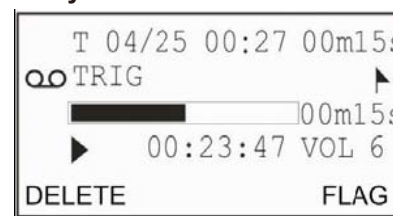
(1) Delete audio files and keep the CDR

(2) Delete both audio files and CDR

5. Search by Time: Search audio files by time

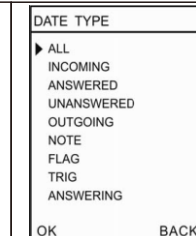
6. Search by number: Search audio files by incoming / outgoing numbers

© Play Audio files



Recording type, date, time, elapse, number and process will be shown on LCD. You can delete or flag the audio file directly.

(D).Searching Option



1. All

Search all records in SD card

2. Incoming

Search all incoming calls including missed calls.

3. Answered

Search all received calls

4. Unanswered Calls

Search all missed calls

5. Outgoing

Search all outgoing calls

6. Note

Search all audio files from MIC

7. Flag

Search marked audio files

8. Trig

Search voice triggered audio files

9. Answering

Search answering machine messages audio files

You can search specified audio files by operating search functions.

9. Enable/Disable Answering System

1. Enable / Disable answering system

Press [] button to enable the answering system, press [] button again to disable the answering system

2. Listen to messages by device

Press [] button to listen first new message. If there's no new message, it will play the latest message. Press BACK to review all messages.

3. Listen to messages remotely

You can call your phone number from outside and access the unit to listen messages. Access the code when you hear the answering machine message, or if your answering machine not opened, the device will start to open default as the setting says 15s (reset available in device setting) Default remote access code: 111

4. Search Messages

(1) Press OPT to search audio files by options.

(2) Press RECORD OPT ANSWERING MACHINE to search messages